

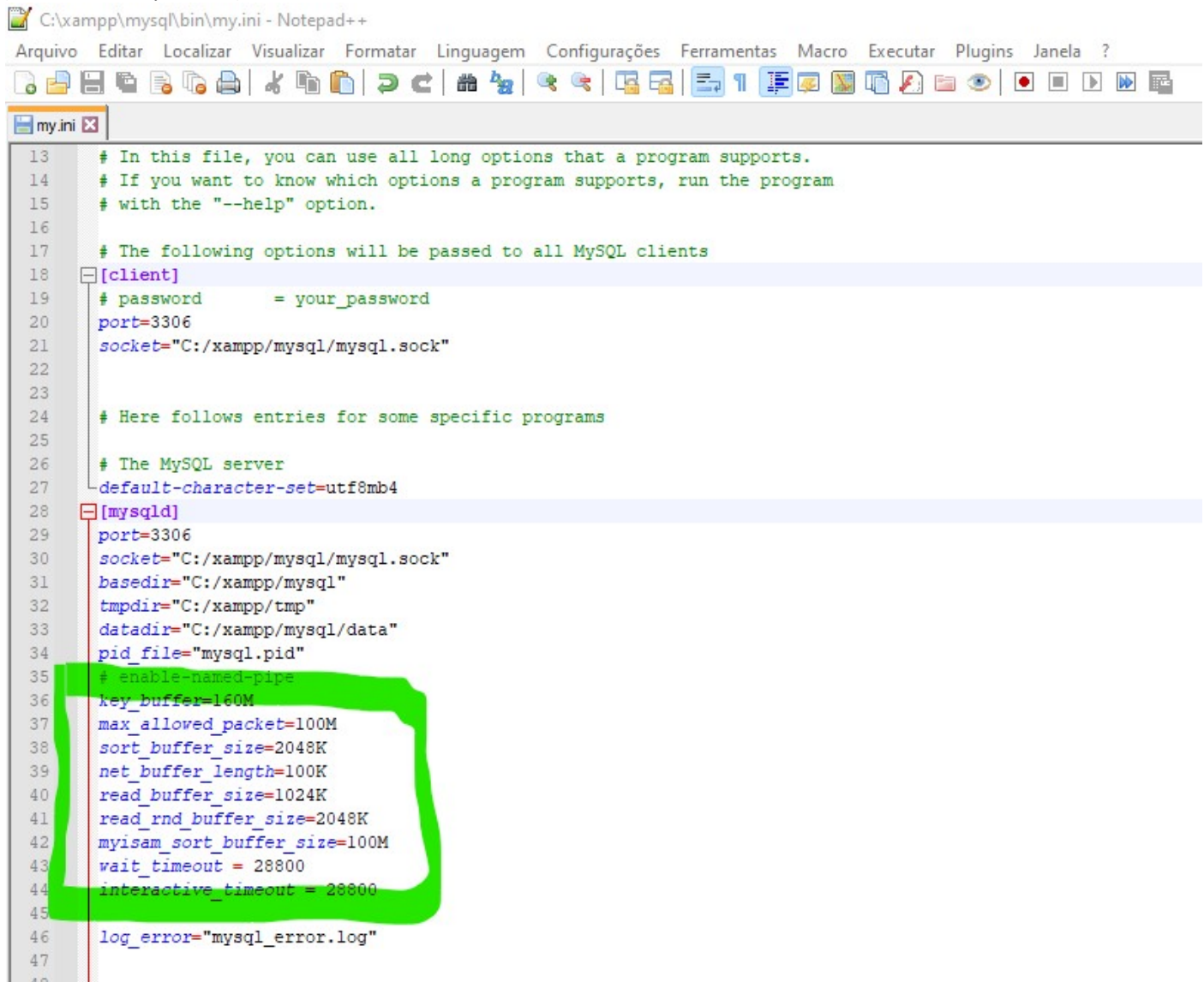
Configuração para o XAMPP

MySQL

Edite o arquivo C:\xampp\mysql\bin\my.ini

(altere os valores para no mínimo como na imagem, depois salve e feche o arquivo)

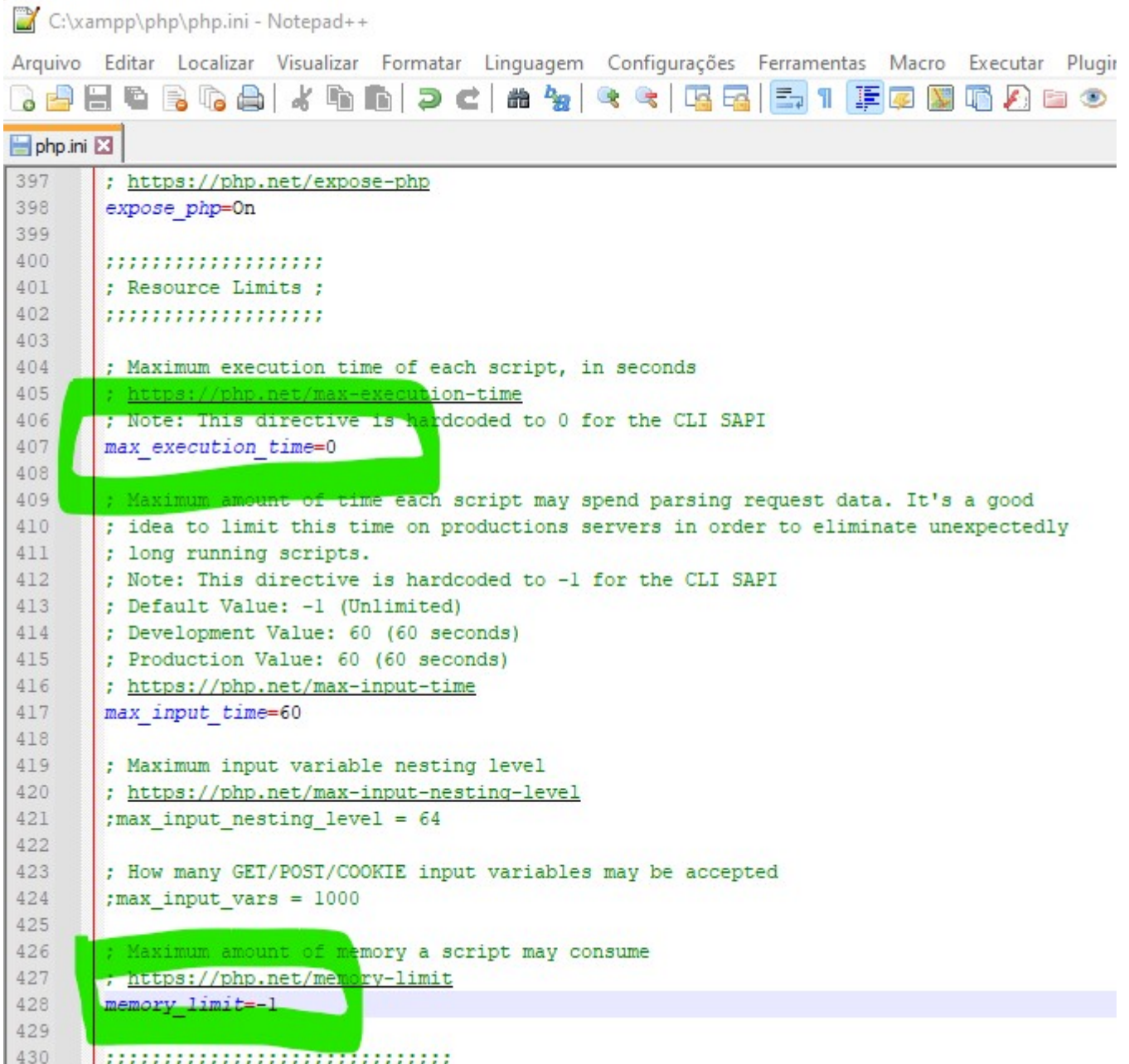
(reinicie o computador)



```
13 # In this file, you can use all long options that a program supports.
14 # If you want to know which options a program supports, run the program
15 # with the "--help" option.
16
17 # The following options will be passed to all MySQL clients
18 [client]
19 # password      = your_password
20 port=3306
21 socket="C:/xampp/mysql/mysql.sock"
22
23
24 # Here follows entries for some specific programs
25
26 # The MySQL server
27 default-character-set=utf8mb4
28 [mysqld]
29 port=3306
30 socket="C:/xampp/mysql/mysql.sock"
31 basedir="C:/xampp/mysql"
32 tmpdir="C:/xampp/tmp"
33 datadir="C:/xampp/mysql/data"
34 pid_file="mysql.pid"
35 # enable-named-pipe
36 key_buffer=160M
37 max_allowed_packet=100M
38 sort_buffer_size=2048K
39 net_buffer_length=100K
40 read_buffer_size=1024K
41 read_rnd_buffer_size=2048K
42 myisam_sort_buffer_size=100M
43 wait_timeout = 28800
44 interactive_timeout = 28800
45
46 log_error="mysql_error.log"
47
48
```

PHP

Edite o arquivo C:\xampp\php\php.ini
(altere os valores como na imagem, salve e feche o arquivo)
(reinicie o computador)

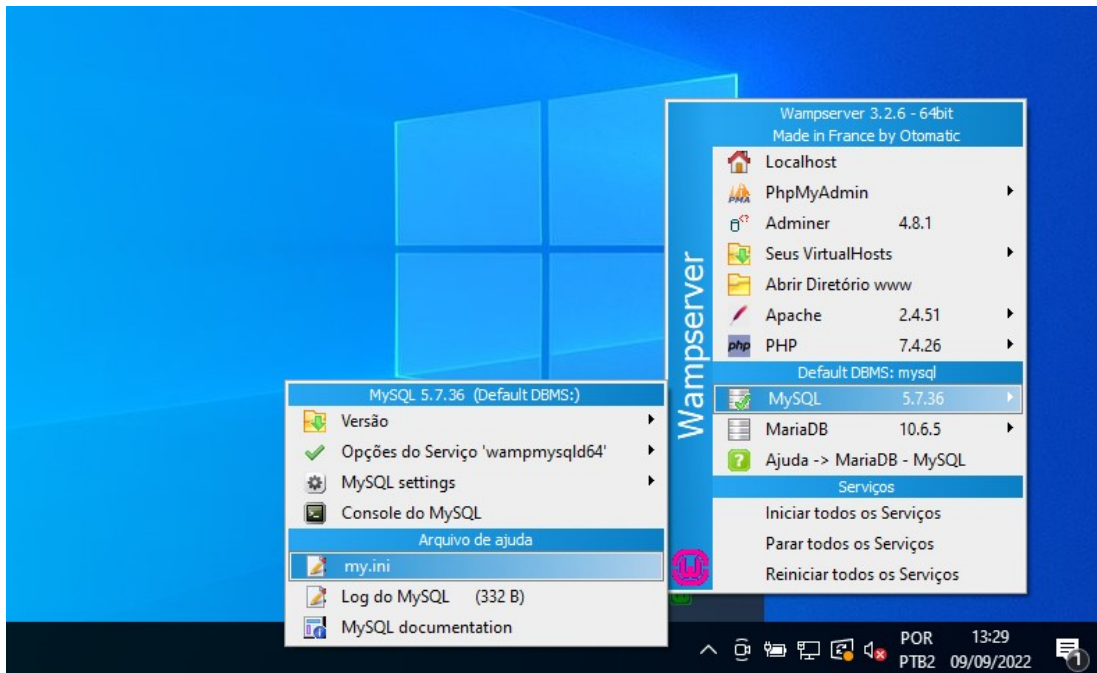


```
397 ; https://php.net/expose-php
398 expose_php=On
399
400 ;::::::::::::::::::
401 ; Resource Limits ;
402 ;::::::::::::::::::
403
404 ; Maximum execution time of each script, in seconds
405 ; https://php.net/max-execution-time
406 ; Note: This directive is hardcoded to 0 for the CLI SAPI
407 max_execution_time=0
408
409 ; Maximum amount of time each script may spend parsing request data. It's a good
410 ; idea to limit this time on productions servers in order to eliminate unexpectedly
411 ; long running scripts.
412 ; Note: This directive is hardcoded to -1 for the CLI SAPI
413 ; Default Value: -1 (Unlimited)
414 ; Development Value: 60 (60 seconds)
415 ; Production Value: 60 (60 seconds)
416 ; https://php.net/max-input-time
417 max_input_time=60
418
419 ; Maximum input variable nesting level
420 ; https://php.net/max-input-nesting-level
421 ;max_input_nesting_level = 64
422
423 ; How many GET/POST/COOKIE input variables may be accepted
424 ;max_input_vars = 1000
425
426 ; Maximum amount of memory a script may consume
427 ; https://php.net/memory-limit
428 memory_limit=-1
429
430 ;::::::::::::::::::
```

Configuração para o Wampserver

MySQL

Usando o Menu do Wampserver procure e abra o arquivo "my.ini" conforme a imagem



Altere as duas linhas indicadas na imagem, salve e feche o arquivo, depois reinicie o computador

```
my - Bloco de Notas
Arquivo Editar Formatar Exibir Ajuda
port =3306
socket = /tmp/mysql.sock

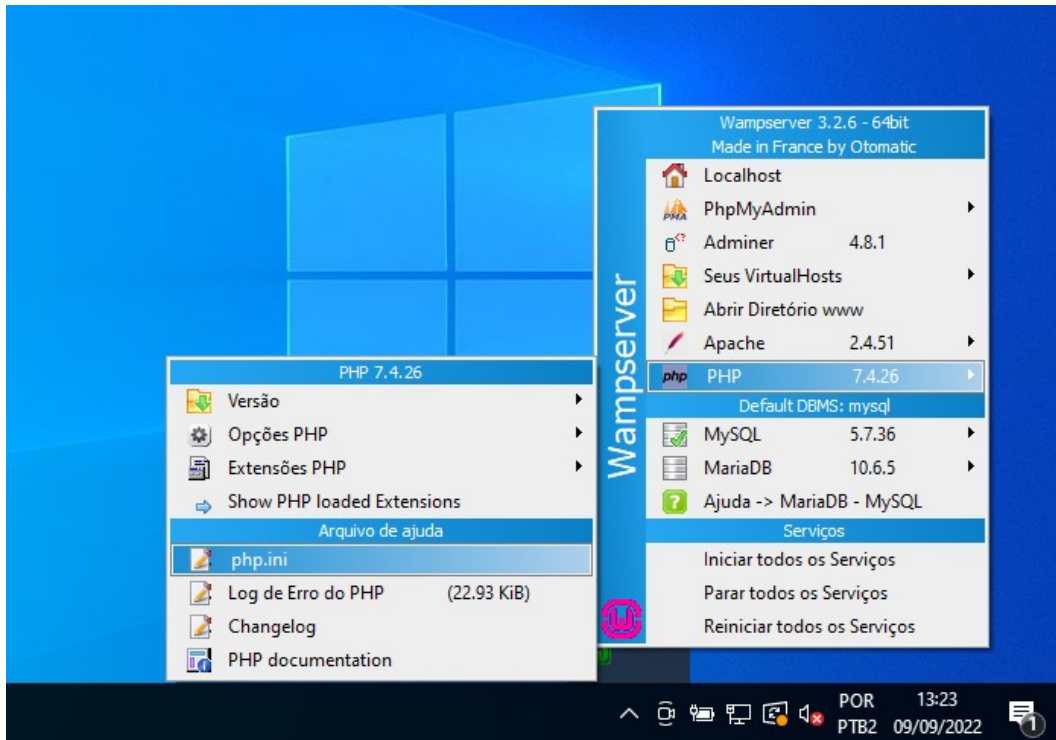
; Here follows entries for some specific programs

; The MySQL server
[wampmysqld64]
;skip-grant-tables
default_authentication_plugin=mysql_native_password
port =3306
socket = /tmp/mysql.sock
key_buffer_size = 1024M
max_allowed_packet = 100M
table_definition_cache = 1200
sort_buffer_size = 2024M
net_buffer_length = 100K
read_buffer_size = 1024M
read_rnd_buffer_size = 2048M
myisam_sort_buffer_size = 128M
wait_timeout = 28800
interactive_timeout = 28800

;Path to mysql install directory
basedir="c:/wamp64/bin/mysql/mysql5.7.36"
log-error="c:/wamp64/logs/mysql.log"
```


PHP

Usando o Menu do Wampserver procure e abra o arquivo “php.ini” conforme a imagem



Altere as duas linhas indicadas na imagem, salve e feche o arquivo, depois reinicie o computador

```
*php - Bloco de Notas
Arquivo Editar Formatar Exibir Ajuda
; http://php.net/max-execution-time
; Note: This directive is hardcoded to 0 for the CLI SAPI
max_execution_time = 0

; Maximum amount of time each script may spend parsing request data. It's a good
; idea to limit this time on productions servers in order to eliminate unexpectedly
; long running scripts.
; Note: This directive is hardcoded to -1 for the CLI SAPI
; Default Value: -1 (Unlimited)
; Development Value: 60 (60 seconds)
; Production Value: 60 (60 seconds)
; http://php.net/max-input-time
max_input_time = 60

; Maximum input variable nesting level
; http://php.net/max-input-nesting-level
;max_input_nesting_level = 64

; How many GET/POST/COOKIE input variables may be accepted
max_input_vars = 2500

; Maximum amount of memory a script may consume
; http://php.net/memory-limit
memory_limit = -1
```